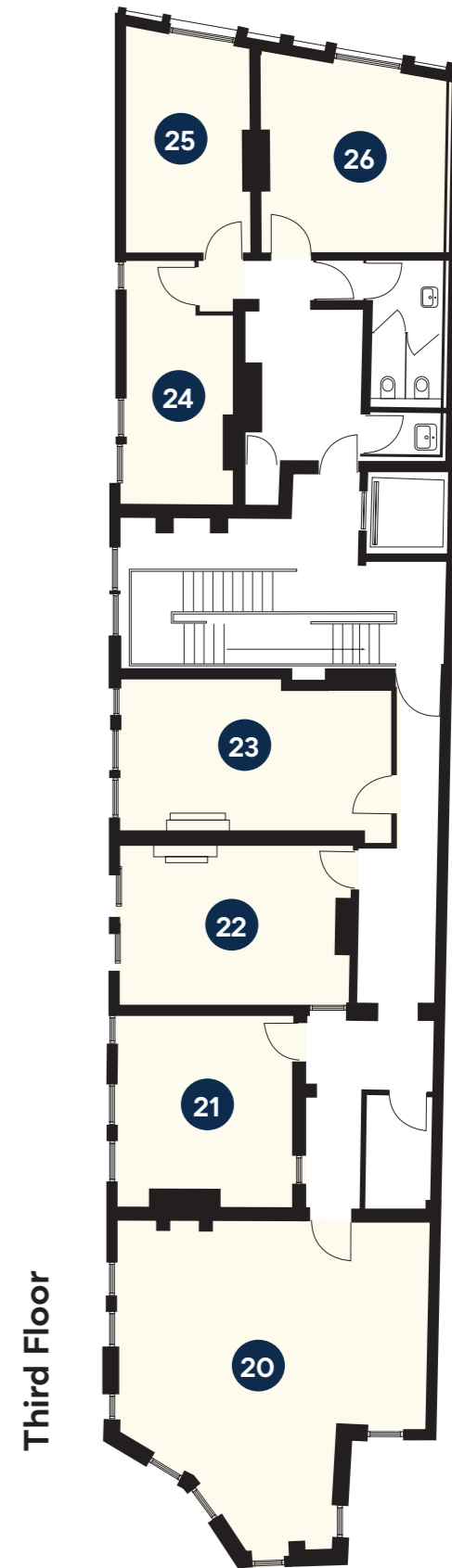
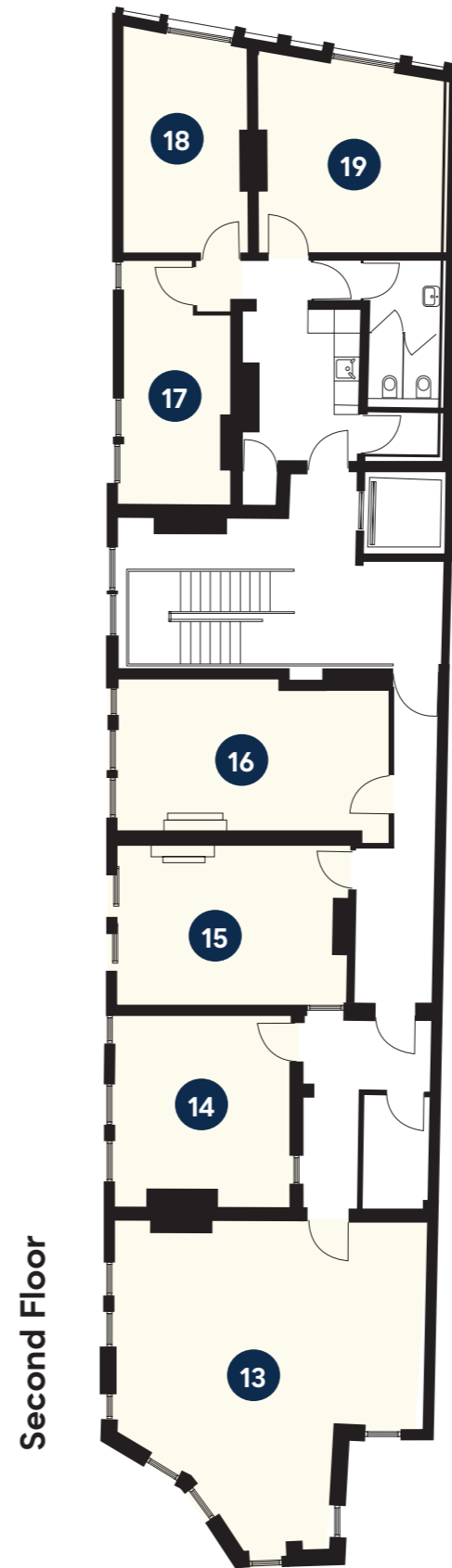
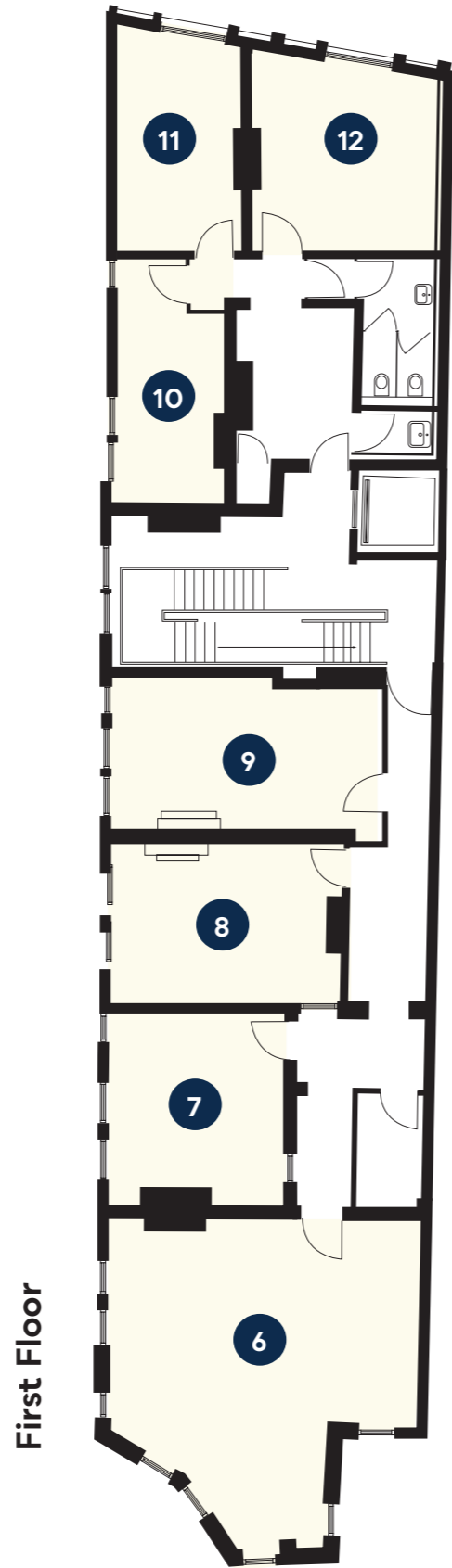
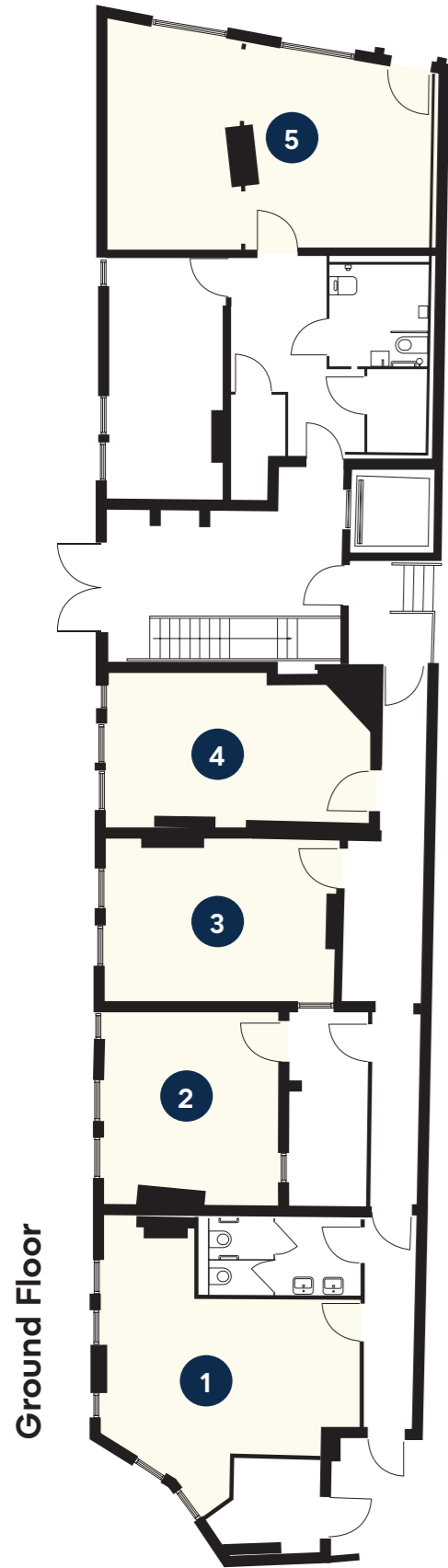


# **BRIXTON HOUSE**

OFFICES

CARLTON MANSIONS

# Availability



\*Plans are for a guide only, please contact us to discuss the latest availability and studio dimensions.

**Brixton is a vibrant, creative community focused on offering the best of both worlds; a wide variety of independent established retail and leisure facilities on your doorstep.**



Being in London's most vibrant districts, you will find yourself nestled amongst the bustling coffee shops and fashionable eateries.




Brixton House occupies a prominent and convenient position, with Brixton station just under a 5 minute walk or a short cycle ride away.

**09** **Vauxhall**  
 Minutes 

**21** **Kings Cross**  
 Minutes 

**12** **Victoria**  
 Minutes 

**12** **London Bridge**  
 Minutes 

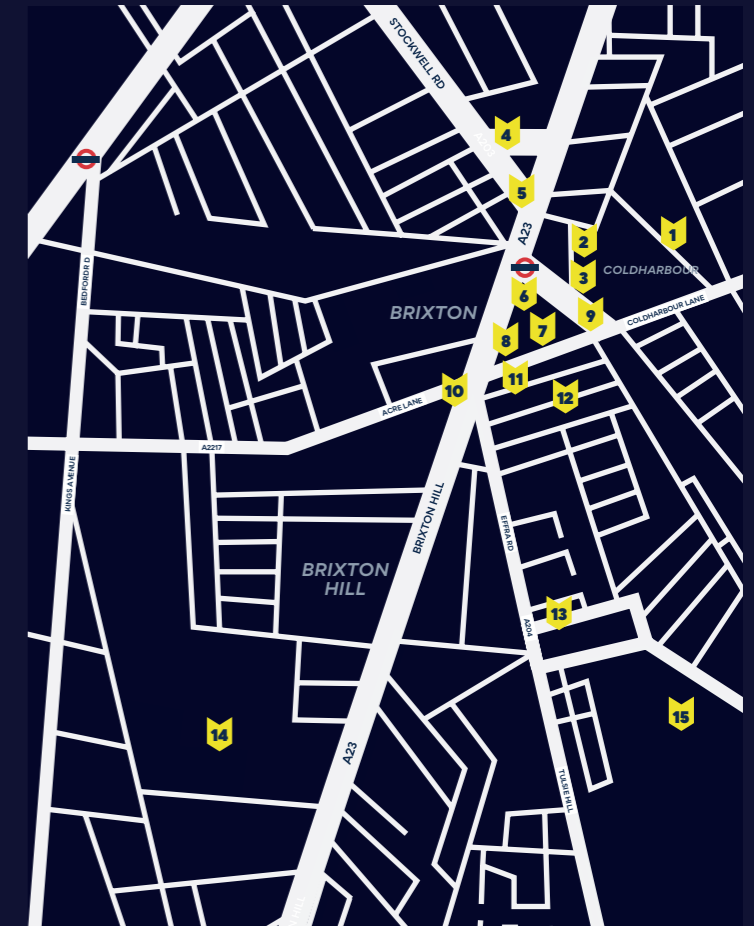
**16** **Oxford Circus**  
 Minutes 

**20** **Waterloo**  
 Minutes 



## Local amenities

-  Brixton Brewery Tap Room
-  Pop Brixton
-  Brixton Village Market
-  O2 Academy Brixton
-  Phonox
-  Brixton Market
-  Bookmongers
-  Ritzy Cinema and Cafe
-  Dogstar
-  Electric Brixton
-  Black Cultural Archives
-  The Effra Hall Tavern
-  Hootananny Brixton
-  Brixton Windmill
-  Brockwell Park



### Restaurants / Dining

**Upstairs at The Department Store**  
 248 Ferndale Rd, Ferndale, London SW9 8FR

**Naughty Piglets**  
 28 Brixton Water Ln, Brixton, London SW2 1PE

**Kricket**  
 41-43 Atlantic Rd, Brixton, London SW9 8JL

**Okan**  
 Brixton Village, Coldharbour Lane

**The Laundry**  
 374 Coldharbour Lane

**Hotels**  
**Premier Inn**  
 434 Coldharbour Ln, Brixton, London SW9 8HH

### Fitness & Leisure

**Fitness First**  
 Blue Star House, 234-244 Stockwell Rd, Ferndale, London SW9 9SP

**BlocFit**  
 Arch 266, 241 Coldharbour Ln, Brixton, London SW9 8RR

**Afewee Boxing & Fitness Gym**  
 Brixton Recreation Centre, Brixton Station Rd, London SW9 8QQ

**Brixton Street Gym**  
 10 Somerleyton Rd, Brixton, London SW9 8ND

# Discover your creative potential.

[www.brixtonhouseoffices.co.uk](http://www.brixtonhouseoffices.co.uk)

385 Coldharbour Lane, Brixton, London, SW9 8GL

For further information please contact:



#### Pilcher London

Simon Rinder

M: 07734 488 286

T: 020 7399 8600

simonrinder@pilcher.london

James Faustino

M: 07834 789 346

T: 020 7399 8600

jamefaustino@pilcher.london



#### USP London

Alex Jackson

M: 07562 649 126

T: 020 7375 7777

alexj@usp.london

Vincent Cheung

M: 07736 880 310

T: 020 7375 7777

vince@usp.london

CGI visuals & Brochure by **Do Digital Agency**

Important Notice: Pilcher London and Union Street Partners and their clients give notice that 1: They are not authorised to make or give any representations or warranties in relation to the property either here or elsewhere, either on their own behalf or on behalf of their client or otherwise. They assume no responsibility for any statement that may be made in these particulars. These particulars do not form part of any offer or contract and must not be relied upon as statements or representations of fact. 2. Any areas, measurements or distances are approximate. The text, photographs and plans are for guidance only and are not necessarily comprehensive. It should be assumed that the property has all necessary planning, building regulation or other consents and Pilcher London and Union Street Partners have not tested any services, equipments or facilities. Tenants must satisfy themselves by inspection or otherwise.

